



# North Carolina COMPOST PRODUCERS

North Carolina is home to more than 50 permitted composting facilities.



Image provided by **Stanley Earth Farms**, a **Wind River Environmental Company**.



## PRODUCTION

Approximately 277,000 tons of soil-enriching compost products and 160,000 tons of mulch produced annually.



## DIVERSION

More than 770,000 tons of materials diverted each year from the landfill.



## JOBS

Supports more than 530 jobs.

## N.C. COMPOST PRODUCERS AND COLLECTION SERVICES

- **Atlas Organics** - Operates the City of Durham's composting facility and provides food waste collection services in western North Carolina.
- **Brooks Contractor** - Operates a composting facility and food waste collection service in the Triangle Area.
- **Crown Town Compost** - Picks up compostables from homes, apartments and offices in the Charlotte area, and holds collection days for people to drop off their materials.
- **Compost Now** - Picks up compostable materials from homes and offices in the Triangle, Asheville area, and beyond.
- **Danny's Dumpsters** - Operates a food waste hauling and composting facility serving Asheville and surrounding areas.
- **Earth Farms Organics (A Wind River Environmental Company)** - Operates a composting facility and provides organic waste hauling services for the Charlotte region.
- **Gallins Family Farms** - Operates a compost facility and provides food waste collection services for Greensboro and the surrounding region.
- **McGill Environmental** - Operates two composting facilities: one in Chatham County and one in Duplin County.
- **Wallace Farms** - Operates two composting facilities: one in Mecklenburg County and one in Davie County.
- **Wilmington Compost Company** - Picks up compostable waste from homes and offices in the Wilmington area.

## INDUSTRIAL COMPOSTING

Industrial composting is an advanced, scientific process that uses the natural, biological process of organic material decomposition, and does so on a large scale with refined techniques. The process involves many steps. Industrial composters:

- develop viable end markets for their compost,
- carefully source compostable material,
- monitor the composting process,
- cure and screen product, and
- test the compost to make sure it meets quality standards.

These facilities must adhere to a significant number of environmental regulations. These standards ensure that the compostable feedstocks are turned into safe, beneficial compost that will add value when used by a consumer.

## COMPOST APPLICATIONS

While a highly beneficial application, compost isn't just a soil amendment for landscaping projects. It also can be used in a wide variety of projects, including:

- Sports turf conditioning
- Wetlands reclamation
- Stormwater management
- Erosion control
- Agriculture
- Silviculture
- Sod production
- Landfill slope stabilization
- Surface mine reclamation
- And more!

## HOW TO BUY COMPOST:

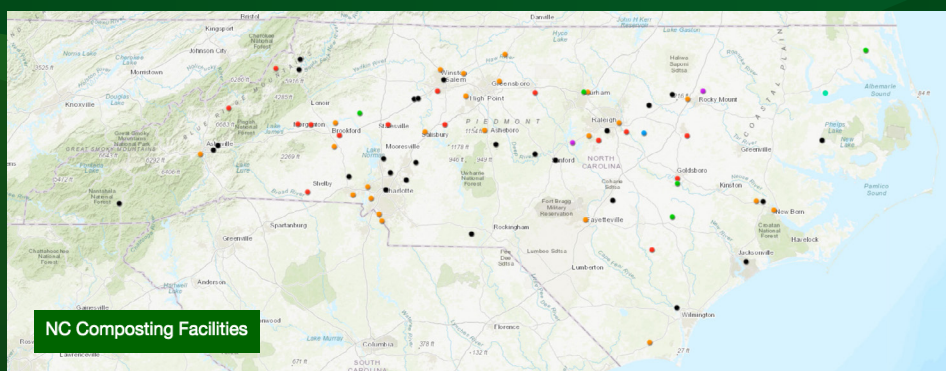
1. Review the specifications outlined at: [Compost | Waste Reduction Partners](#).
2. Consider buying bulk compost, which is more economical than buying compost in bags. The N.C. Composting Council has guidance on how to purchase bulk compost, including a formula to help calculate how much compost will be needed: [NC Bulk Compost Map - NCCC \(carolinacompost.com\)](#).

## BENEFITS OF USING COMPOST

Using compost has been proven to improve soil health and help prevent soil erosion. Compost adds organic nutrients and retains water, which improves the biological, chemical and structural health of soil. The soil can then support healthier plants by efficiently transporting nutrients and water to them. Applying compost can reduce the need for repeated use of chemical fertilizers, which over time, helps save money. Because compost is made from organic residuals — food scraps, organic by-products and biosolids — using compost offers the additional benefit of diverting organic waste from landfills.

Just one cubic yard of compost can sequester more than 700 pounds of CO<sub>2</sub> in the soil.

## LEARN TO PURCHASE COMPOST OR FIND N.C. PERMITTED COMPOSTING WITH THIS [MAP!](#)



This profile was created by Waste Reduction Partners.  
[WasteReductionPartners.org](http://WasteReductionPartners.org)